

# AIMBI Victoria Meeting

Thursday 3<sup>rd</sup> April 2018



## Tour of the Australian Synchrotron

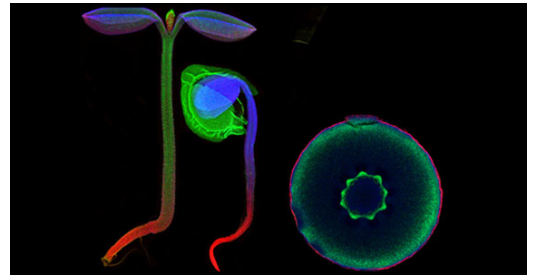
What is a synchrotron?

In simple terms, a synchrotron is a very large, circular, megavoltage machine about the size of a football field. Inside there is a vast, circular network of interconnecting tunnels and high tech apparatus.

Synchrotrons use electricity to produce intense beams of light a million times brighter than the sun. The light is produced when high-energy electrons are forced to travel in a circular orbit inside the synchrotron tunnels by 'synchronised' application of strong magnetic fields.

The electron beams travel at just under the speed of light – about 299,792 kilometres per second. The intense light they produce is filtered and adjusted to travel into experimental workstations, where the light reveals the innermost, sub-microscopic secrets of materials under investigation, from human tissue to plants to metals and more.

With this new knowledge that synchrotron science provides about the molecular structure of materials, researchers can invent ways to tackle diseases, make plants more productive and metals more resilient – among many other beneficial applications of synchrotron science.



For more information about this tour:

<http://www.synchrotron.org.au/about-us/visiting-us>

**There are still places available for those interested – until Thursday 26<sup>th</sup> April**

**Date:** Thursday 3<sup>rd</sup> May 2018

**Time:** 15:45 - 17:30 tour

**Location:** Meet in front entrance 800 Blackburn Road in Clayton, Victoria

**After the tour:** Refreshments / dinner at the Nottinghill Pub  
260-262 Ferntree Gully Road, Notting Hill Victoria 3168

**RSVP:** Thursday 26<sup>th</sup> April 2018, via email to [joss.dimock@mh.org.au](mailto:joss.dimock@mh.org.au)

For more information contact Joss Dimock Ph.9342 7233

The Australian Institute of  
Medical and Biological Illustration

